



Transforming Education Pre-Summit 2022

28 June – Global Engagement Day

29-30 June – Ministerial Segment

Practical Information

The Transforming Education Pre-Summit will take place at UNESCO Headquarters in Paris, Fontenoy building.

UNESCO Headquarters has two entrances:
7 avenue Fontenoy 75007 Paris (main entrance)
125 avenue de Suffren, 75007 Paris (entrance to meeting days)



All delegates are required to check in at the **Registration Desk**: 125 avenue de Suffren, 75007. Registration will be open from **8:15am on Tuesday 28 June.**

For delegates who will be attending from **Wednesday 29 June, please also register at the Registration Desk (Suffren entrance) at least one hour before the start of the session.**

Delegates will receive a badge to gain access to the building and for security purposes.



Contents

I. SUMMIT INFORMATION	3
I.1 MEETING HOURS.....	3
I.2 MEETING AGENDA & DOCUMENTATION.....	3
I.3 WORKING LANGUAGES.....	3
I.4 TIME ZONE	3
I.5 INTERNET CONNECTION ON SITE.....	3
I.6 FOOD AND CATERING SERVICES	3
I.7 COVID-RELATED HEALTH INSTRUCTIONS.....	3
I.8 MEDICAL SERVICES WHILE AT THE PRE-SUMMIT	4
I.9 BANKING SERVICES AT UNESCO HQs.....	4
I.10 CONTACT INFORMATION.....	4
II. PRACTICAL INFORMATION WHILE IN PARIS.....	5
II.1 HOSPITALS, EMERGENCY NUMBERS & PHARMACIES.....	5
II.2 OPENING TIMES IN PARIS	6
II.3 AIRPORT/TRAIN STATION TRANSFERS	6
II.4 PUBLIC TRANSPORT IN PARIS AND THE 'ILE DE FRANCE' REGION.....	8
II.5 RESTAURANTS IN AND AROUND UNESCO	9
II.6 HOTELS.....	11
II.7 WEATHER	28



I. SUMMIT INFORMATION

I.1 MEETING HOURS

The Pre-Summit will start on **Tuesday, 28 June at 10:00am** with the Engagement Day. It will end on **Wednesday, 30 June at 6pm**.

I.2 MEETING AGENDA & DOCUMENTATION

The final agenda, list of participants and all other documentation of Transforming Education Summit 2022 will be available shortly.

I.3 WORKING LANGUAGES

The working language of the meetings are English and French, with interpretation in the six UNESCO official languages during the plenary sessions.

I.4 TIME ZONE

Paris is one hour ahead of Greenwich Mean Time (GMT+1).

I.5 INTERNET CONNECTION ON SITE

- **Free wi-fi** connection is provided at the meeting venue and throughout the Fontenoy building.
- Network: **HQ-AIR-PUB**
- ID: **hq-air**
- Password: **uneswifi**

I.6 FOOD AND CATERING SERVICES

Participants will be able to eat in the cafeteria or the UNESCO restaurant (at their own expense). Coffee/tea breaks will be offered by UNESCO throughout the duration of the meetings.

I.7 COVID-RELATED HEALTH INSTRUCTIONS

Considering the positive evolution of the health situation in France, wearing a mask is no longer compulsory at UNESCO headquarters. However, it remains strongly recommended in the presence of other people and persons who wish to continue wearing a mask are encouraged to do so. For your protection, we recommend wearing a mask in meeting rooms, conference rooms, or any gathering place.

While you are with us at the Pre-Summit, we also kindly ask you to respect hygiene precautions, such as the use of hydro-alcoholic gel when entering UNESCO buildings, frequent hand washing and policies to ensure efficient ventilation of the meeting rooms and premises.



Any person showing symptoms (or suspicion of symptoms), whether vaccinated or not, must alert the organizers of the Pre-Summit, and can seek medical advice UNESCO's Medical Services located on the 2nd floor by contacting them at service.medical@unesco.org (also see below).

For all other medical matters, including travel-related COVID-19 tests, appointments can be booked on the Doctolib site <https://www.doctolib.fr/>

I.8 MEDICAL SERVICES WHILE AT THE PRE-SUMMIT

- **A first-aid service** is located on the 2nd floor of the UNESCO Headquarters (Fontenoy main building). Non-emergency medical services will not be provided on premises.
- **Costs** for any medical treatment incurred while in France are to be covered by individual participants. Visitors from the European Union will benefit from the same health services as French citizens. For this, you need to obtain a form E111 at your local health centre in your home country before leaving for the Pre-Summit. Non-European participants are advised to purchase travel insurance in their home country before leaving, including coverage for France and any other countries visited in transit.
- **UNESCO Medical Service** +33 (0) 1 45 68 08 67 service.medical@unesco.org
- **Non-emergency medical consultations** can be booked on <https://www.doctolib.fr/>. The **Medical Europe Centre** located at 44, rue Amsterdam 75009 Paris **Tel: 01 42 81 93 33** also proposes various low-price consultations:

I.9 BANKING SERVICES AT UNESCO HQs

UNESCO has its own Bank service in both HQ buildings: Fontenoy and Miollis: **Société Générale**. In the *Fontenoy Building*, the Bank is located on the ground floor and it's open from **9:30am** to **12:15am** and from **1.15pm to 5.15pm**. There is a cash withdrawal machine available 24 hours.

I.10 CONTACT INFORMATION

For any further information, please contact: tes@unesco.org



II. PRACTICAL INFORMATION WHILE IN PARIS

II.1 HOSPITALS, EMERGENCY NUMBERS & PHARMACIES

English is spoken at the following hospitals:

The American Hospital in Paris

63 boulevard Victor Hugo, 92200 Neuilly-sur-Seine

Tel: 33 1 46 41 25 25 (*metro: Anatole France /Pont de Levallois*).

The Hertford British Hospital

3, rue Barbès, 92300 Levallois-Perret

Tel: 33 1 46 39 22 22 (*metro: Anatole France*)

Hôtel Dieu

1 parvis Notre-Dame, 75001 Paris

Tel : 01 42 34 82 34

Emergency telephone numbers:

- S.A.M.U. : 15	- S.O.S Help: 01 47 23 80 80
- Police : 17	(Emergency number in English)
- Firemen: 18	- Anti-poison Centre : Tel. 01 40 37 04 04
- S.O.S doctors: 01 43 37 77 77	- Ambulances Tel. 01 43 78 26 26
- S.O.S dentists: 01 43 37 51 00	

Pharmacy addresses:

The following pharmacies are located near to UNESCO (general opening hours from 8:00 a.m. to 9:00 p.m.)

Pharmacie Suffren

82 Avenue Suffren

75015 Paris

Tel: 01 45 67 16 66

Pharmacie Place Cambronne

6 Place Cambronne

75015 Paris

Tel: 01 45 67 12 86



Pharmacie du Métro (Boulevard de Grenelle)
138 Boulevard de Grenelle
75015 Paris
Tel: 01 45 75 33 35

24hour pharmacies (from 8:00pm to 9:00am)

Pharmacie Derhy
84 av. des Champs Elysées 75008 Paris
M° lines n° 1 or 9 : Franklin D. Roosevelt
Tel: 01 45 62 02 41

Pharmacie Perrault
6, place Clichy Paris 75009
Metro Line 13: Place de Clichy
Tel: 01 48 74 65 18

Pharmacie Rico
6, place Félix Eboué Paris 75012
Metro Line 6 : Daumesnil
Tel. 01 43 43 19 03

II.2 OPENING TIMES IN PARIS

Most companies open from 8/9am to 6pm.

- Administrative offices generally close at 5pm, except for post offices which sometimes stay open until 6.30 pm (check the address on the internet for confirmation).
- Boutiques and shops are generally open continuously from 9am to 6.30pm / 7 pm with late closings, "les nocturnes", on certain days in department stores.
- Shops are traditionally closed on Sunday and Monday, although supermarkets generally stay open.
- Banks are generally open from 9am to 4.30pm and closed on Saturday (some open in until 4pm) and Sunday.
- Museums usually open between 9am and 10am until 5pm or 6pm and close on Monday or Tuesday.
- Monuments generally have the same opening times as museums, although the schedule can vary depending on the season.

Discover the best of Paris on the Official Website of the Paris Convention and Visitors Bureau: <http://en.parisinfo.com/>

II.3 AIRPORT/TRAIN STATION TRANSFERS

Paris airports and train stations are served by public transport and taxi services. Below are the links to key web resources to help you plan your transfer.



Flights arriving at **ROISSY CDG (Charles de Gaulle International Airport)** <http://www.parisaeroport.fr/>

[Paris-Charles de Gaulle airport by public transport](#)

[Uber](#)



[Taxi G7 CDG Airport](#)



Flights arriving at **PARIS-ORLY** <http://www.parisaeroport.fr/>

[Paris-Orly airport by public transport](#)

[Uber](#)



[Taxi G7 ORLY Airport](#)



[Air France bus](#)

Travelers all companies
Regular 4 lines direct Paris / Airports
Service 7 / 7
☎ 33 (1) 41 56 89 00 (for recorded message in French and English)
Web: <http://www.lescarsairfrance.com/en.html>

[The airport shuttle service](#)

You can also use a shared or personal service to anywhere across Paris. Arrange your pickup in advance - the **Airport Shuttle** will be waiting for you when you arrive and waiting to bring you back to the airport when you depart at the end of your stay.

These services usually accept payment by credit card. It is nonetheless suggested that you contact them by phone in advance to confirm that you can pay the driver directly by card (including which cards are accepted).



You are requested to make direct reservations online or by contacting the Selected Company.

- <http://www.parishuttle.com>
- <http://www.netcapricorn.com/clients/airportconnection/paris.htm>

II.4 PUBLIC TRANSPORT IN PARIS AND THE 'ILE DE FRANCE' REGION

RER /Metro/Bus

An RER/TGV station now serves the airport directly. Trains leave every 15 minutes during the hours of 5.30 a.m. – 11:30 p.m. to downtown.

Direct link to be used for your itinerary from the Airport to the Hotel (to be printed before you travel): http://www.ratp.fr/en/ratp/c_21879/tourists/

Taxis

IMPORTANT TIPS

Please be aware that Parisian Taxis generally charge an extra fee when clients reserve a taxi in advance. This is to cover the distance already covered by the driver to reach the client pick-up point.

In order to avoid any financial inconvenience, it is also important that you are aware of the most economical route to your hotel. You might wish to print out a map on the following link: <http://www.viamichelin.co.uk/> (you choose an option).

Type: "95700 Aéroport Roissy-Charles-de-Gaulle" for Charles de Gaulle Airport or "94390 Aéroport de Paris-Orly" for the Orly Airport

Public transport in Paris and in the Suburbs: RER /Metro/Bus

The most economic way of travelling around Paris and its suburbs.

RATP Itinerary





Public Transports to UNESCO building:

Metro

Line 10 - Ségur (behind the Main entrance, 10 minutes to the main entrance)

Line 6: Cambronne -(5 minutes' walk to UNESCO)

Line 8: Ecole Militaire - (10 to 15 minutes' walk UNESCO)

Bus :

Line 28 : (Ecole Militaire)

Line 80 : (Place Cambronne).

II.5 RESTAURANTS IN AND AROUND UNESCO

There are many restaurants in the neighbourhood. Here are just a few suggestions:

In UNESCO

UNESCO Restaurant (Fontenoy)

7th floor Fontenoy (lunch only)

Opens from 12 to 2.30 pm

Tel: 01 45 68 16 00 / Reservation required

UNESCO Cafeteria/Bar service (Fontenoy)

Staff Bar - 7th Floor (Self service)

Opens from 8.30 am

Rami (Lebanese)

30 boulevard Garibaldi 75015 PARIS

Tel : 01 45 66 04 43

Le Garibaldi (French fixed menu)

58 boulevard Garibaldi 75015 PARIS

Tel : 01 45 67 15 61

Mina Mahal (Indian)

25 rue Cambronne 75015 Paris



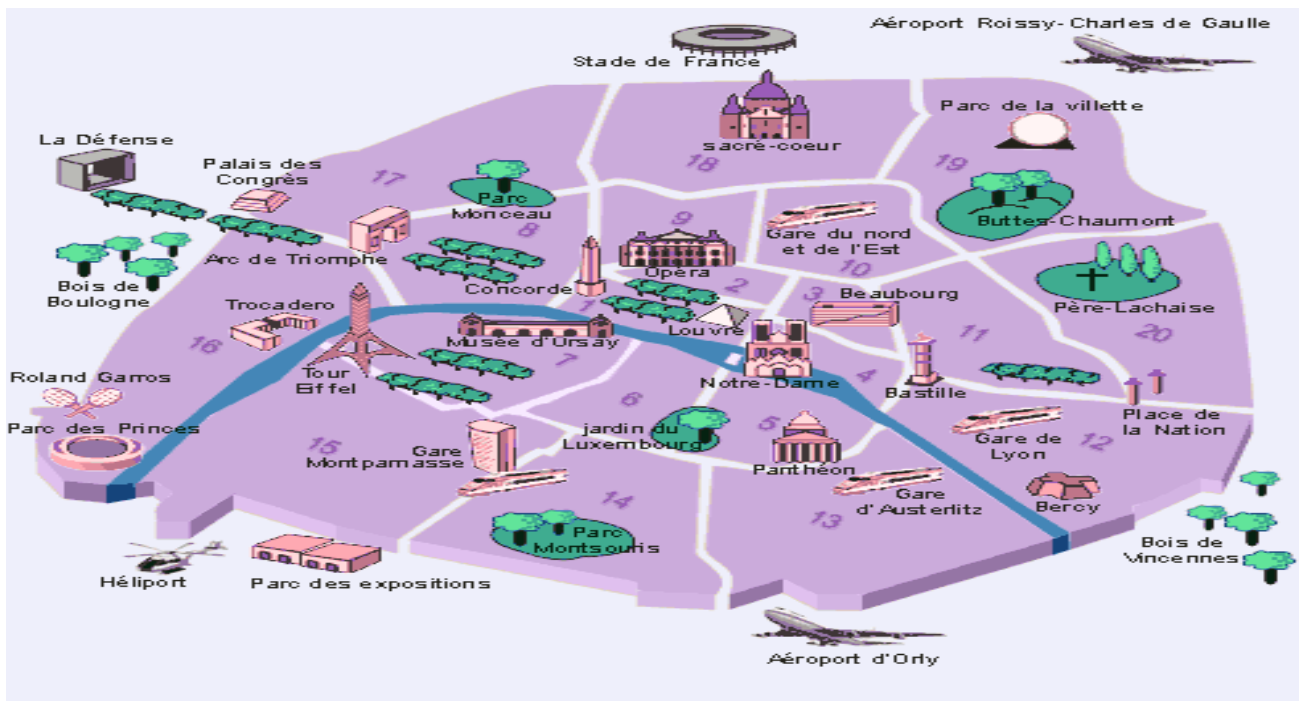
Tel: 01 47 34 26 17

Myung Ka (Corean)
19 bd Garibaldi 75015 Paris

Sushi Shop (delivery only)
Tel: 01 47 83 41 45
Tel: 0826 826 628 (0,15€ /min)

Guide Paris Restaurants <https://www.parisinfo.com/ou-manger-a-paris>

MAP VISIT PARIS



PLEASE NOTE THAT UNESCO IS A NON-SMOKING ORGANIZATION



II.6 HOTELS

Paris offers a wide choice of hotels, with prices and availability varying widely from one day to the next. You may wish to consult travel aggregators (e.g., booking.com, hotels.com, tripadvisor.com) to scan the market in the vicinity of UNESCO Headquarters before deciding whether to book the hotel through that platform or with the hotel directly.

Localize your Hotel via Google Maps: <http://maps.google.fr/>

Hôtel Baldi***

42 boulevard Garibaldi 75015 PARIS



- **Rules for cancellation :**
24 Hours before the date of arrival
- **Guarantees required when booking :**
Mail & credit card only in guarantee

ADDITIONAL EXPENSES:

Hotel Taxes:
Breakfast (optional):

Hotel is at 5min walk to UNESCO
Located at two steps of the Eiffel Tower"



PRICES

Single Standard shower	Double Standard	Double Superior	Twin Superior
94€	104€	113€	118€



Web: <http://baldi-paris-hotel.com/>

CONTACT

Tel : 33 (0) 1 47 83 20 10

E-mail: reservation@hotelbaldi.fr



Hôtel Eiffel Villa Garibaldi***

48 boulevard Garibaldi 75015 PARIS



- **Rules for cancellation:**
24 hours before the arrival day
- **Guarantees required when booking:**
Mail or phone & credit card only in guarantee

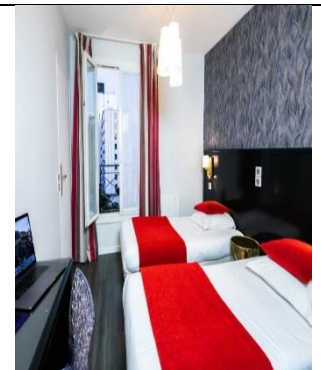
ADDITIONAL EXPENSES:

Hotel Taxes:
Breakfast (optional): (Single/Twin rooms)

Hotel is 5min walk to UNESCO
Located near the Eiffel Tower, The Seine, UNESCO Headquarters, Ecole Militaire

PRICES

Single Standard	Twin Room	Double Room + extra bed with Breakfast	Triple room <u>with</u> Breakfast
179€	215€	229€	242€



Web: <https://hoteleiffelvillagaribaldi.com/en/>

CONTACT

Tel : **33 (0) 1 56 58 56 58**

E-mail: villagaribaldi@hotel-eiffel.com



Hôtel Lecourbe ***

28 rue Lecourbe 75015 PARIS



- **Rules for cancellation:**
24 Hours before the date of arrival
- **Guarantees required when booking:**
Mail or phone and credit card only in guarantee



ADDITIONAL EXPENSES:

Hotel Taxes:
Breakfast (optional):

Hotel is at 10min walk to UNESCO

Located between the Eiffel Tower, Montparnasse and the Exhibition Centre at the Porte de Versailles



PRICES

Standard Simple	Standard Double	Confort Double
170€	185€	190€



Web: <https://www.hotel-lecourbe-eiffel.com/>

CONTACT

Tel : 33 (0) 1 47 34 49 06

E-mail: hotel.lecourbe@free.fr



Hotel Amiral Fondary ***		30 rue Fondary 75015 PARIS					
	<ul style="list-style-type: none"> Rules for cancellation: 72 Hours before the date of arrival Guarantees required when booking: Mail or fax & credit card only in guarantee 						
	<p>ADDITIONAL EXPENSES:</p> <p><u>Hotel Taxes:</u> <u>Breakfast (optional):</u></p> <p>Hotel is at 10min walk to UNESCO Located in the heart of the fifteenth arrondissement of Paris between the Exhibition Park at Porte de Versailles and the Eiffel Tower</p>						
	<p>PRICES</p> <table border="1"> <tr> <td>Double Classique</td> <td>Twin Room</td> </tr> <tr> <td>153€</td> <td>Twin: 173€</td> </tr> </table>		Double Classique	Twin Room	153€	Twin: 173€	
	Double Classique	Twin Room					
153€	Twin: 173€						
<p>Web: https://www.hotelamiralfondary.com/</p>							
		<p>CONTACT</p> <p>Tel : 33 (0) 1 45 75 14 75</p> <p>E-mail: lefondary@wanadoo.fr</p>					





Hotel Eiffel Petit Louvre***

1 rue de Lourmel, 75015 PARIS



- **Rules for cancellation:**
24 Hours before the date of arrival
- **Guarantees required when booking:**
Mail or phone & credit card only in guarantee

ADDITIONAL EXPENSES:

Hotel Taxes:

Breakfast (optional):

Hotel is 16 min walk to UNESCO

Located 10-minute stroll from the picturesque Eiffel Tower, the Trocadéro, and the Seine River.



PRICES

Single room	Twin Room
168€	215€



Web: <https://hotel-paris-petitlouvre.com/>

CONTACT

Tel : 33 (0) 1 45 78 17 12

E-mail: reception@hotelpetitlouvre.com



MAISON 46 ***

46, rue de la Croix Nivert, 75015 PARIS



- **Rules for cancellation:**
24 Hours before the date of arrival
- **Guarantees required when booking:**
Mail or phone & credit card only in guarantee

ADDITIONAL EXPENSES:

Hotel Taxes: included
Breakfast (optional):

Hotel is 11min walk to UNESCO

Located a few minutes' walk from the Eiffel Tower, Invalids and the European Space Agency



PRICES

Double room - Superior	Eiffel Suite
99 €	250 €



Web: <https://www.maison46.com/>

CONTACT

Tel : 33 (0) 1 56 58 56 78

E-mail: contact@maison46.com



Hôtel Eiffel Segur ***

34 boulevard Garibaldi 75015 PARIS



- **Rules for cancellation:**
48 Hours before the date of arrival
- **Guarantees required when booking:**
Mail or fax & credit card only in guarantee

ADDITIONAL EXPENSES:

Hotel Taxes:
Breakfast (optional):

Hotel is 5min walk to UNESCO
Located a few minutes' walk from the Eiffel Tower, Invalids.



PRICES

Single room - Superior	Double room - Deluxe
185€	205€



Web: <https://paris-hotel-eiffel-segur.com/>

CONTACT

Tel : 33 (0) 1 33 1 43 06 60 50

E-mail: reservation@paris-hotel-eiffel-segur.com



Hôtel Eiffel Villa Garibaldi***

48 boulevard Garibaldi 75015 PARIS



- **Rules for cancellation:**
24 hours before the arrival day
- **Guarantes required when booking:**
Mail or phone & credit card only in guarantee

ADDITIONAL EXPENSES:

Hotel Taxes:

Breakfast (optional):

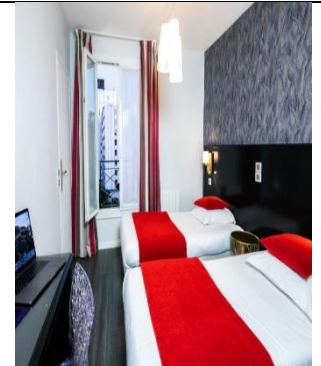
Hotel is 5min walk to UNESCO

Located near the Eiffel Tower, The Seine, UNESCO Headquarters, Ecole Militaire



PRICES

Single Standard	Twin Room	Double Room + extra bed with Breakfast	Triple room <u>with</u> Breakfast
179€	215€	259€	269€



Web: <https://hoteleiffelvillagaribaldi.com/en/>

CONTACT

Tel : 33 (0) 1 56 58 56 58

E-mail: villagaribaldi@hotel-eiffel.com



Hôtel Le Bailli de Suffren***

149 avenue Suffren 75015 PARIS



- **Rules for cancellation:**
The day before the arrival, 12 o'clock latest
- **Guarantees required when booking:**
Mail or fax & credit card only in guarantee

ADDITIONAL EXPENSES:

Hotel Taxes: Hotel Taxes:
Breakfast (optional):

Hotel is 5mins to UNESCO

Located between the Eiffel Tower and Invalides, close to the UNESCO, Pasteur Institute and Necker Hospital.



PRICES

Double room - Standard /Twin room - Standard	Double Executive
166€	186€



Web:
https://www.lebailliparis.com/?qclid=EAlaIqObChMI0ZrRil_69wIV1sDICH30AATtEAAYASAAEgKqVPD_BwE

CONTACT

Tel : 33 (0) 1 56 58 64 64

E-mail: contact@lebailliparis.com



Hôtel Ibis Cambronne Tour Eiffel **

2 rue Cambronne 75015 PARIS



- **Rules for cancellation:**
24 Hours before the date of arrival
- **Guarantees required when booking:**
Mail or fax & credit card only in guarantee

ADDITIONAL EXPENSES:

Hotel Taxes:
Breakfast (optional):

Hotel 8 min walk to UNESCO

Located in the heart of Paris' 15th arrondissement, the hotel is right next to the Cambronne metro station (on line 6), near UNESCO Headquarters.

PRICES

Chambre Standard avec 2 lits simples	Double Room
165€	175€



Web: [Hotel in Paris - ibis Paris Eiffel Tower Cambronne 15th - ALL \(accor.com\)](http://Hotel in Paris - ibis Paris Eiffel Tower Cambronne 15th - ALL (accor.com))

CONTACT

Tel : 33 (0) 1 40 61 21 21 / 22

E-mail: H1400-RE@accor.com



Hôtel Eiffel Seine ***

3 bd de Grenelle 75015 PARIS



- **Rules for cancellation:**
24 Hours before the date of arrival
- **Guarantees required when booking:**
Mail or phone & credit card only in guarantee

ADDITIONAL EXPENSES:

Hotel Taxes: i

Breakfast (optional):

Hotel 8 min walk to UNESCO

Located at the foot of the overpass section of the Bir Hakeim metro station (line 6), sleeps just near the Eiffel Tower



PRICES

Chambre Double Classique	Double Room
174€	240€



Web:
<https://www.eiffelseinehotel.paris/decouvrir>

CONTACT

Tel : 33 (0) 1 45 78 14 81

E-mail: contact@eiffelseine.com



Hôtel Eiffel Turenne**

20, avenue de Tourville, 75007 PARIS



- **Rules for cancellation:**
24 Hours before the date of arrival
- **Guarantees required when booking:**
Mail or phone & credit card only in guarantee

ADDITIONAL EXPENSES:

Hotel Taxes:

Breakfast (optional):

Hotel 7min walk to UNESCO7

Located at between Invalid and Eiffel tower

PRICES

Single room	Classic Room
315€	335€



Web: <https://www.hoteleiffelturenne.com/>

CONTACT

Tel : 33 (0) 1 47 05 99 92

E-mail: reservation@hoteleiffelturenne.com



Hôtel de la Motte Picquet***

30 Av. de la Motte-Picquet, 75007 PARIS



- **Rules for cancellation:**
24 Hours before the date of arrival
- **Guarantees required when booking:**
Mail or phone & credit card only in guarantee

ADDITIONAL EXPENSES:

Hotel Taxes:

Breakfast (optional):

Hotel 10 min walk to UNESCO

Located in heart of the city, within minutes of Eiffel Tower of course, the Invalides, Trocadero, Champ-de-Mars, the Rodin Museum, or the recent Quai Branly.



PRICES

Classic Double room	Suite - Romantic with bath
240 €	272€



Web: <https://www.hotelmottepicquetparis.com/en/>

CONTACT

Tel : 33 (0) 1 47 05 09 57

E-mail: book@hotelmottepicquetparis.com



Hôtel de France Invalides***

102, boulevard de la Tour Maubourg, 75007 PARIS



- **Rules for cancellation:**
24 Hours before the date of arrival
- **Guarantees required when booking:**
Mail or phone & credit card only in guarantee

ADDITIONAL EXPENSES:

Hotel Taxes: not included
Breakfast (optional): 13€/person/day

Hotel 5 min walk to UNESCO

Located at the foot of the overpass section of the Bir Hakeim metro station (line 6)



PRICES

Single Room	Twin Room
227 €	247€



Web: <https://www.hoteldefrance.com/>

CONTACT

Tel : 33 (0) + 1 47 05 40 49

E-MAIL:

CONTACT@HOTELDEFRANCE.COM



Hôtel le Walt ****

37 avenue de la Motte Picquet 75007, Paris



- **Rules for cancellation:**
Non-cancellable, non modifiable
- **Guarantees required when booking:**
Mail or phone & credit card only in guarantee



ADDITIONAL EXPENSES:

Hotel Taxes: not included
Breakfast (optional): 13€/person/day

Hotel is 9 min walk to UNESCO
Just two steps from Invalides and the Champs de Mars

PRICES

Classic Room	Double Room
388€	413€ (executive)







Web: <http://en.lewaltparis.com/>

CONTACT

Tel : 33 (0) 1 45 51 55 83

E-mail: lewalt@inwoodhotel.com



Villa Hotel Saxe Eiffel ****		9, Villa de Saxe 75007 Paris					
 	<ul style="list-style-type: none"> Rules for cancellation: Non-cancellable, non modifiable Guarantees required when booking: Mail or phone & credit card only in guarantee <p>ADDITIONAL EXPENSES: <u>Hotel Taxes:</u> <u>Breakfast (optional):</u></p> <p>Hotel is 4 min walk to UNESCO Located in the prestigious and residential 7th district of Paris, in-between the Eiffel Tower and Montparnasse Tower.</p>						
	<p>PRICES</p> <table border="1"> <tr> <td>Villa Classic</td> <td>Villa Superior</td> </tr> <tr> <td>311€</td> <td>335€</td> </tr> </table>		Villa Classic	Villa Superior	311€	335€	 
Villa Classic	Villa Superior						
311€	335€						
<p>Web: https://www.villa-saxe-eiffel.com/en/contact-us/</p>		<p>CONTACT Tel : 33 (0) 1 47 83 86 90 E-mail: hotel@vseparis.com</p>					



Le marquis Inwoodhotel ****

15 rue Dupleix 75015 PARIS



- **Rules for cancellation**

6 days before the date of arrival

- **Guarantees required when booking:**

Mail or phone & credit card only in guarantee



ADDITIONAL EXPENSES:

Hotel Taxes:

Breakfast (optional):

Hotel is 10 min walk to UNESCO

Situated in the commercial district of the 15th arrondissement, two steps from the rue du Commerce.

PRICES

Classic Room	Double Room
280 €	392 (executive)



Web: <http://en.lemarquisparis.com/>

CONTACT

Tel : 33 (0) 1 43 06 31 50

E-mail: lemarquis@inwoodhotel.com



First Hotel Tour Eiffel****

2, boulevard Garibaldi, 75015 PARIS



- **Rules for cancellation:**

7 days before the date of arrival

- **Guarantees required when booking:**

ADDITIONAL EXPENSES:

Hotel Taxes:

Breakfast: (included Deluxe and Suite)

Mail or phone & credit card only in guarantee

Hotel is 7 min walk to UNESCO

Located a 5-minute walk from the Champs de Mars and a 15-minute walk from the Eiffel Tower.



PRICES

Chambre Double Classique	Double Superior	Double room - Deluxe	Suite
251	258€	318€	325 €



Web: <https://www.firsthotelparis.com/>

CONTACT

Tel : 33 (0) 1 43 06 93 26

E-mail: bonjour@firsthotel.fr

If there no available rooms left in the above given list,
you might wish to try at the following link which gives you a larger choice of hotels:
http://www.france-hotel-guide.com/en/paris_practical_information.htm

II.7 WEATHER

Finally, if you are wondering what the weather will be like one week before your arrival, please consult: <https://www.meteoart.com/europe/france/ile-de-france/paris?page=month&month=June>